

PART OF THE NW.1/4 OF SECTION 31, T.6N., R.1W., S.L.B.&M.

IN OGDEN CITY
SCALE 1" = 100'

TAXING UNIT: 25

SEE PAGE 50

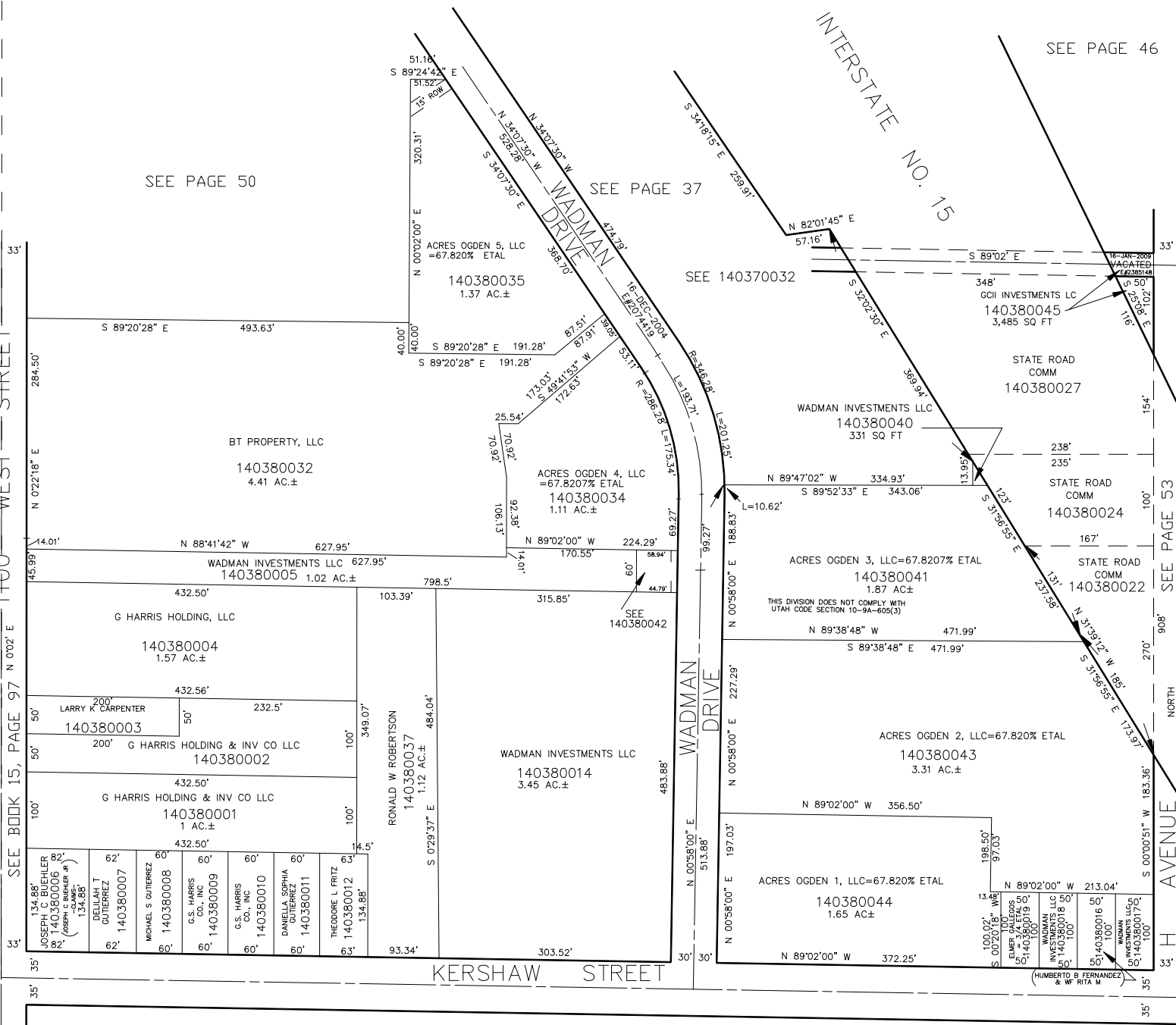
SEE PAGE 37

SEE PAGE 46

INTERSTATE NO. 15

SEE BOOK 15, PAGE 97 N 0°02' E 1100 WEST STREET

SEE PAGE 53 NORTH AVENUE



SEE PAGE 36